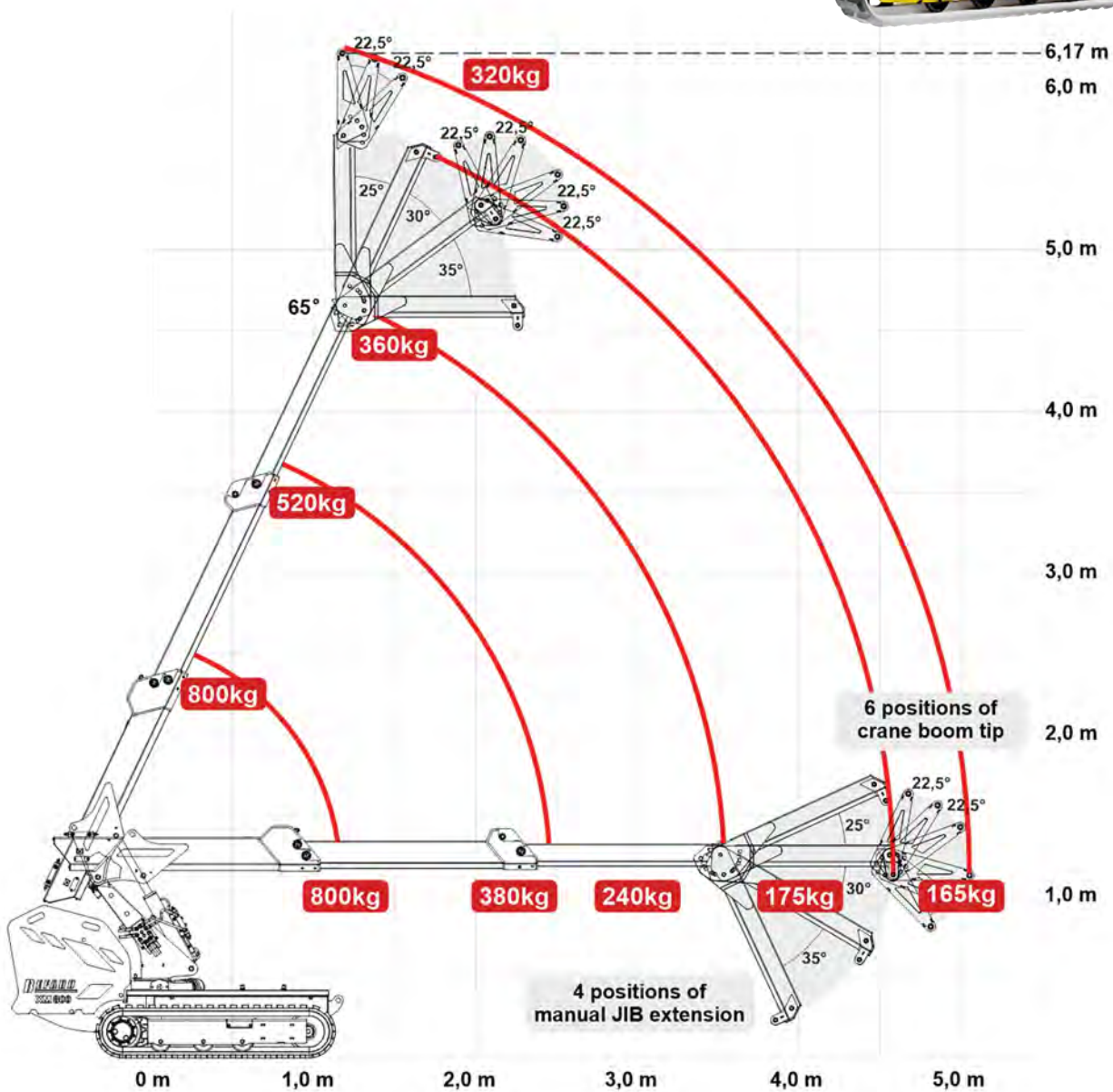


SuperCrane™ XM800

Lifting crane for easy positioning

SuperCrane™ XM800 crawler crane with Pick 'n' Carry function. It is a super flexible mini crane with many possibilities. A small assistant on the construction site to be used for both transport and crane function.



EQUIPMENT

- Winch capacity up to 500 kg
- 2 extension arms
- Detachable loading part
- Non-Marking tracks

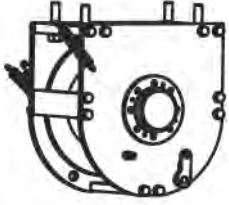
TECHNICAL DATA

Own weight: 1100 kg
 Length: 230 cm
 Width: 78 cm
 Height: 145 cm

FEATURES

- Pick 'n' Carry function
- Extension tracks
- Remote control

All configurations of XM800 are equipped with a hook, which can be re-mounted on extra equipment if necessary.



Winch



Crane boom tip



Manual JIB extension

SPECIFICATIONS

Maximum lifting capacity: 800 kg
 Transport of mini crane: By car up to 3.5 t
 Anti-overload system: Yes
 Hydraulic extensions: 2
 Maximum vertical reach: 6,17 m
 Maximum horizontal reach: 5,0 m
 Hydraulic slewing range: Rotation to the left and right 25° (all in all 50°)
 Remote control: Both for driving and operation of the crane.
 Propulsion: Lithiumion batteries (possible direct connection to 230V/110V)



Remote control for SuperCrane™ XM800

Remote control with control for both driving and operation of the crane, including start-stop motor.

