

SuperElevate™ Lumberjack

Efficient, reliable, and innovative lifting systems

Available in models:

- MiniMax L3
- MiniMax L5
- Lumberjack L20-3



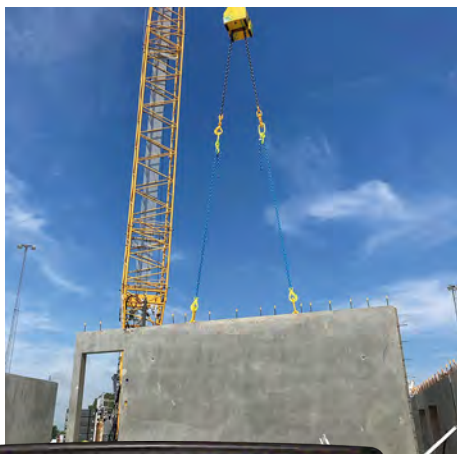
SuperElevate™ Lumberjack is a proven and robust technology in a new design. Radio-controlled precision levelling reduces installation time and increases safety.

We hire and deliver efficient, reliable, and innovative Lumberjack lifting systems to facilitate material handling and improve profitability, primarily within the building and construction sector.

Lifting, levelling, and turning materials on the construction site can be a time-consuming and challenging task. The Lumberjack's remote-controlled levelling hoists make this work much more efficient and safer. All types of items that require accuracy and precision are easily navigated into place, reducing costly crane time and waiting time.

We hire the Lumberjack remote-controlled levelling hoists with a lifting capacity of up to 20 tons. All lifting beams have robust and well-proven technology, as well as reliable electric operation, ensuring they function in all weather conditions. The hoists are manoeuvred smoothly with user-friendly and classified remote controls.

We are happy to provide free advice and guidance so you can solve your task most effectively.





Lumberjack L20-3

A remote-controlled levelling hoist with proven and robust technology



The Lumberjack L20-3 is based on a proven and robust technology in a new design, which, with its radio-controlled precision levelling, reduces installation time and increases safety. This radio-controlled levelling hoist is ideal for lifting items of all kinds that require accuracy and precision to navigate into place.

SPECIFICATIONS

Lifting capacity:	Up to 20 tons
Chain wheel traction:	Chain wheel traction
Levelling length:	6 m (3 m in both directions)
Levelling speeds:	2
Chain angle:	Up to 80°
Point of lubrication:	1
Total chain length:	Up to 6 m
Chain dimensions:	60.5 x 20 mm
Own weight:	Approx. 395 kg
Height:	1050 mm
Width:	712 mm
Depth:	623 mm

Control system

Radio range:	100 m with a clear view
Motor voltage:	24 VDC
Power consumption in hibernate mode:	50 mA
Continuous power consumption:	60 A – 1,400 watts
Peak power consumption:	100 A – 2,400 watts

Certification:

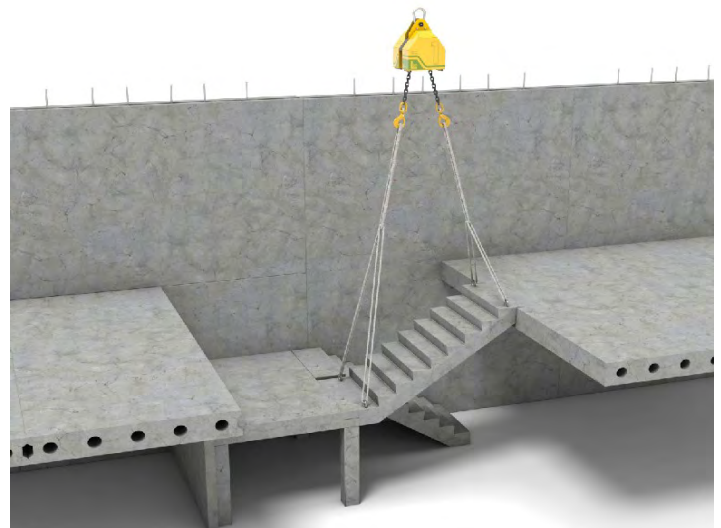
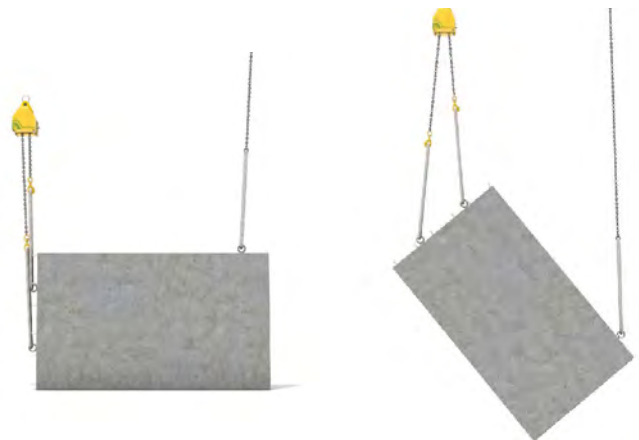
CE-marked product

Environmental requirements

Operating temperature:	-20°C – +40°C
Storage temperature:	-20°C – +70°C
Relative humidity, RH:	0 - 90% during storage

Optional accessories

- Protective cover
- Chain kits in other lengths
- Extra batteries
- Transport packaging





The Lumberjack L20-3 makes heavy and cumbersome levelling work easy:

- Remote levelling of loads up to 20 tons
- Built-in battery = no need for power or hydraulics
- Intuitive operation
- Is delivered directly to the construction site and ready to use
- Positions elements with millimetre precision
- Remote control with a range of 100 metres and 2 speed levels



MiniMax L3

The MiniMax L3 remote-controlled precision levelling reduces your installation time and increases safety on the construction site.



The MiniMax L3 lifting yoke levels and handles building materials easily and safely with a simple press of a button. It ensures that you reduce costly crane time and waiting time. The lifting beam handles both light and heavy objects weighing up to 3 tons.

With its robust, proven technology and reliable electric operation, the MiniMax L3 can work in temperatures ranging from -20°C to +40°C. The lifting beam is easy to clean due to its robust housing and IP65-classified electrical system.

The MiniMax L3 requires minimal service - only cleaning and battery charging. The battery status is displayed. Under normal use, it is sufficient to charge the battery once a week. The MiniMax L3, with its user-friendly IP67-classified remote control, is easy to operate.

SPECIFICATIONS

Lifting capacity:	Max 3 tons
Levelling force:	Max 500 kg
Max levelling stroke length:	3 m (1.5 m in both directions)
Levelling speeds:	2
Max chain angle:	60° with a 3-ton load
Total chain length:	3 m
Chain dimensions:	30.5 x 10 mm
Weight:	126 kg (Including chain and hooks)
Height:	638 mm
Width:	503 mm
Depth:	495 mm



Control system

Radio range:	100 m line of sight
Electric motor voltage:	24 VDC
Power consumption in hibernate mode:	50 mA
Max continuous power consumption:	24 A
Peak power consumption:	30 A

Certification:

CE-marked product

Environmental Requirements

Operating temperature:	-20°C – +40°C
Storage temperature:	-20°C – +45°C
Relative humidity, RH:	0 - 90% during storage

Optional Accessories

- Protective cover
- Chain kits in other lengths
- Additional batteries
- Transport packaging



MiniMax L5

The MiniMax L5 is a lifting yoke that, by utilising both new and proven technology, levels and handles loads efficiently and safely with high precision.



The MiniMax L5 lifting yoke can handle both light and heavy objects up to 5 tons. It maximises efficiency, reduces assembly time, and increases safety with precise and comprehensive levelling and handling of various types of objects. The MiniMax L5 has a reversible stroke length of up to 1.5 metres per hook in the standard version.

With a press of a button, the MiniMax L5 levels and handles its objects easily and safely, reducing costly crane time and wait time. A robust and proven technology, along with a secure electrical operation enable the lifting yoke to operate in all weather conditions from -20 to +40 degrees Celsius in demanding environments.

The robust, durable, and reliable housing, plus the IP65-classified electrical system, makes the lifting yoke easy to clean. In addition to cleaning, battery charging is the only thing to consider. The battery status is indicated on the yoke, and with normal use, one charge per week is sufficient.

The MiniMax L5 is used as a snatch block. With a user-friendly and IP67-classified remote control, the MiniMax L5 is manoeuvred smoothly. The chain wheel is disengaged with the remote control for free-running chain with the same function as a snatch block. A longer chain package can be ordered as an option.

SPECIFICATIONS

Lifting capacity:	Max 5 tons
Levelling force:	Max 750 kg
Max levelling stroke length:	3 m (1.5 m in both directions) in the standard version
Levelling speed:	2
Max. chain angle:	60° at 5 tons load
Total chain length:	3 m in the standard version
Chain dimensions:	30.5 x 10 mm
Weight:	approximately 130 kg (Including chain and hooks)
Height:	638 mm
Width:	503 mm
Depth:	495 mm

Control System

Radio range:	100 m with a clear view
Motor voltage:	24 VDC
Power consumption in hibernate mode:	50 mA
Max continuous power consumption:	24 A
Peak power consumption:	30 A
Certification:	CE-marked product

Environmental requirements

Operating temperature:	-20°C – +40°C
Storage temperature:	-20°C – +45°C
Relative humidity, RF:	0 - 90% during storage

Optional accessories

- Protective hood
- Chain kit in other lengths
- Additional batteries
- Transport packaging.



SuperElevate™

Transport Carrier Hoeflon TC1 - kompakt, stærk og robust

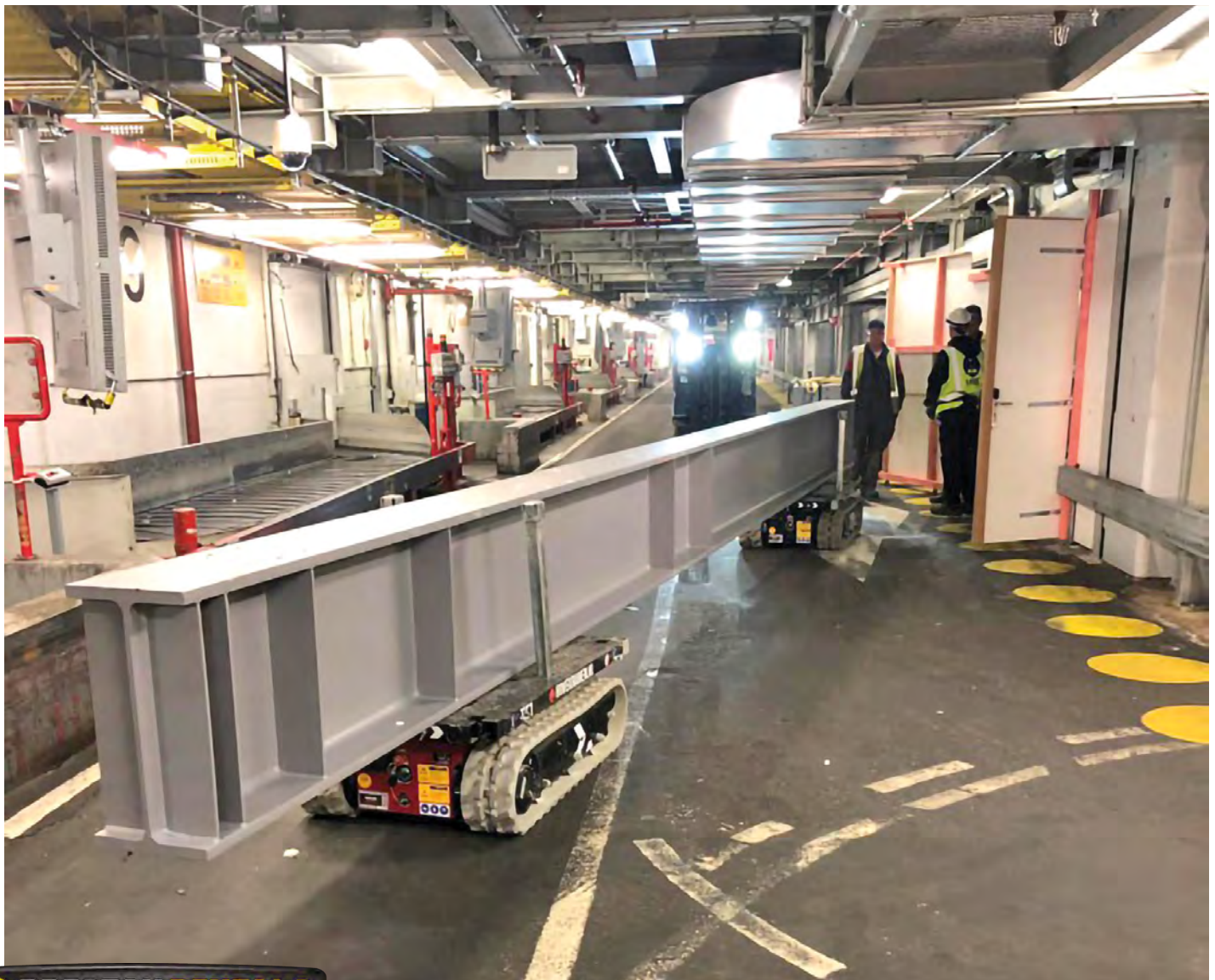
Hoeflon TC1 transportør er løsningen til horisontal transport af lange, tunge byggematerialer og udstyr på en projektplads. Det er en batteridrevet transportplatform med uanede muligheder.

TC1 platformen er monteret med drejekrans med et roterende plateau, som kan rotere uendeligt. Det giver store muligheder ved transport af bjælker, trapper mv. TC1 transportøren har et lavt tyngdepunkt og en præcis manøvrering. Den kører let rundt i forskellige jordhøjder og bakket terræn, selv med en belastning.

TC1 kan også køre på meget stejle hældninger. Det er en ideel maskine i kombination med Hoeflon kranerne.

Den er designet med diverse stokkehuller og forlængerarme samt surringsøjer, som sikrer at godset ligger stabilt under transport. Dette gør det også nemmere at konstruere specialdesignede stativer, glasbukke o. lign.

Vores transportør, Hoeflon TC1, kan passere gennem enhver dør. Uanset hvor dine varer befinder sig, kommer vores lille hjælpetransportør der.





SPECIFIKATIONER

Kapacitet:	1200 kg
Egenvægt:	500 kg
Mål (lxbxh):	1450 x 800 x 420 mm
Drivkraft:	Elektrisk
Strømforsyning:	Batteripakke
Oplader:	230V - 50Hz
Opladningstid:	13 timer
Jordtryk:	0,15 kg/cm ²
Max hastighed:	2,2 km/t
Hastighedsregulator:	Proportional drift
Max hældningsvinkel:	25°
Max hældningsvinkel:	20°
Lastplatform (lxb):	1340 x 730 mm
Platformstype:	Drejelig



Kan fås i flere størrelser - kontakt os for at høre mere.

TC1 i korte træk:

- Kompakt, stærk og robust
- Meget præcis manøvrering
- Let at påmontere lastemner
- Platformen er bevægelig / drejbar
- Støjsvag takket være det elektriske drev

